

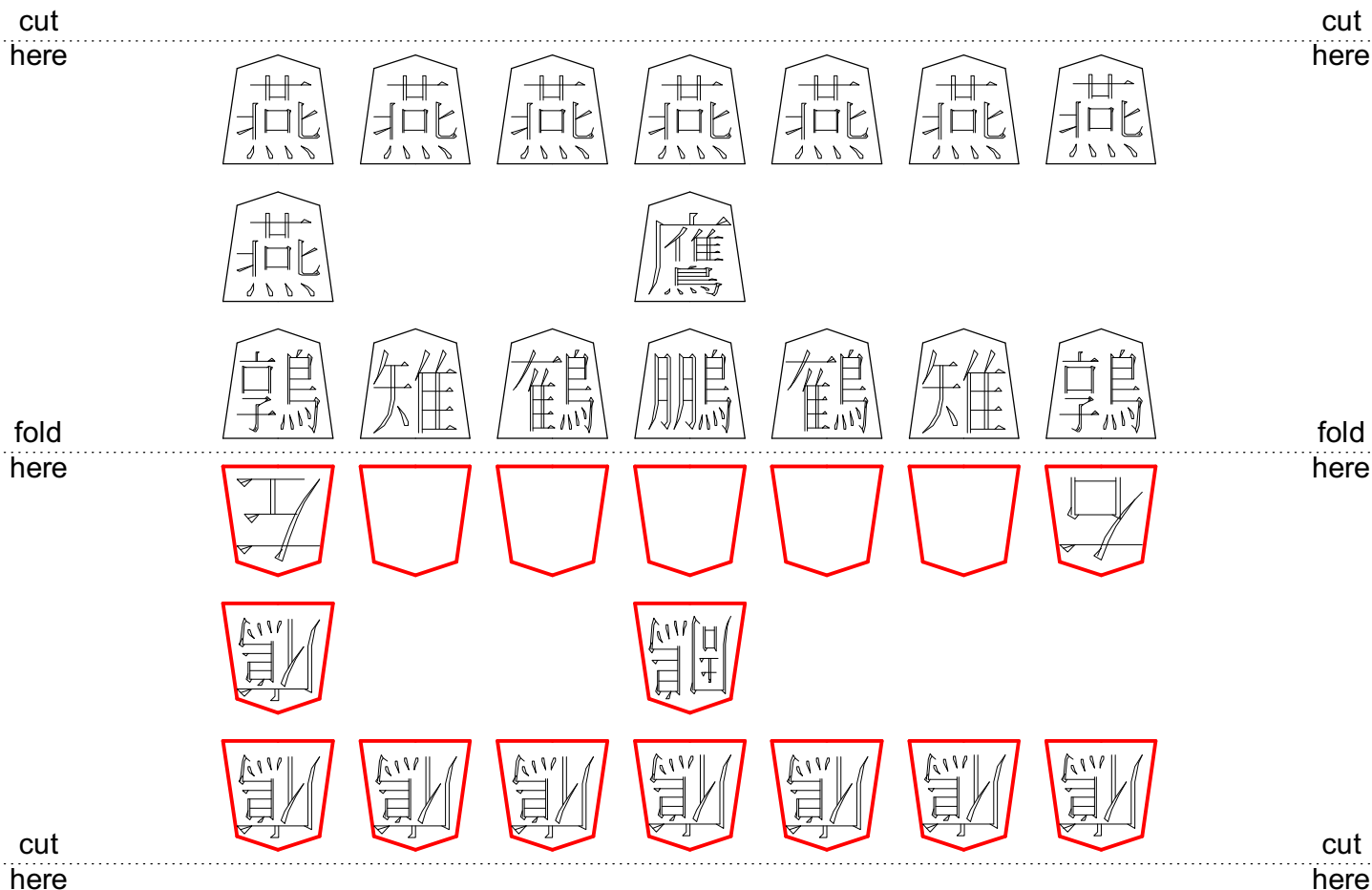
Do-It-Yourself Tori-Shogi Set (by Phil Holland)

7 6 5 4 3 2 1

		○			○	
		○			○	

a
b
c
d
e
f
g

Do-It-Yourself Tori-Shogi Set (by Phil Holland)



To make your own Tori-Shogi pieces:

- (1) cut along dotted lines at the top and bottom of the piece shapes,
- (2) fold along the central dotted line and stick the 2 halves together carefully,
- (3) cut the individual pieces out after the glue has dried.